

eMethods

PubMed

((“Statin” [MeSH Terms] OR “HMG-CoA Reductase Inhibitor” [All Fields] OR “HMG-CoA Reductase Inhibitors” [All Fields] OR “Hydroxymethylglutaryl-CoA Reductase Inhibitor” [All Fields] OR “Statins” [All Fields])) AND ((“Diabetic Kidney Disease” [MeSH Terms] OR “Diabetic Glomerulosclerosis” [All Fields] OR “Diabetic Nephropathy” [All Fields] OR “Intracapillary Glomerulosclerosis” [All Fields] OR “Kimmelstiel-Wilson Disease” [All Fields] OR “Nodular Glomerulosclerosis” [All Fields]))

Web of Sciences

((“Statin” OR “HMG-CoA Reductase Inhibitor” OR “HMG-CoA Reductase Inhibitors” OR “Hydroxymethylglutaryl-CoA Reductase Inhibitor” OR “Statins”)) AND ((“Diabetic Kidney Disease” OR “Diabetic Glomerulosclerosis” OR “Diabetic Nephropathy” OR “Intracapillary Glomerulosclerosis” OR “Kimmelstiel-Wilson Disease” OR “Nodular Glomerulosclerosis”))

CENTRAL

#1 MeSH descriptor: [Statin] explode all trees

#2 ((“HMG-CoA Reductase Inhibitor” OR “HMG-CoA Reductase Inhibitors” OR “Hydroxymethylglutaryl-CoA Reductase Inhibitor” OR “Statins”))

#3 MeSH descriptor: [Diabetic Kidney Disease] explode all trees

#4 ((“Diabetic Kidney Disease” OR “Diabetic Glomerulosclerosis” OR “Diabetic Nephropathy” OR “Intracapillary Glomerulosclerosis” OR “Kimmelstiel-Wilson Disease” OR “Nodular Glomerulosclerosis”))

Final: (#1 OR #2) AND (#3 OR #4)

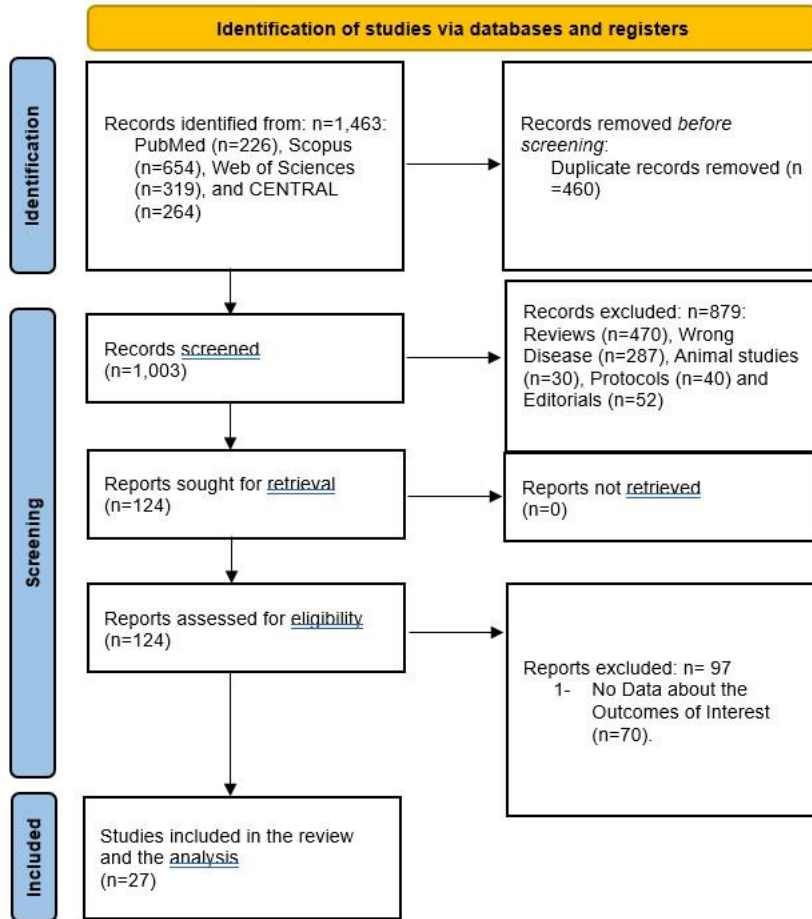
Scopus

#1 ((“Statin” OR “HMG-CoA Reductase Inhibitor” OR “HMG-CoA Reductase Inhibitors” OR “Hydroxymethylglutaryl-CoA Reductase Inhibitor” OR “Statins”))

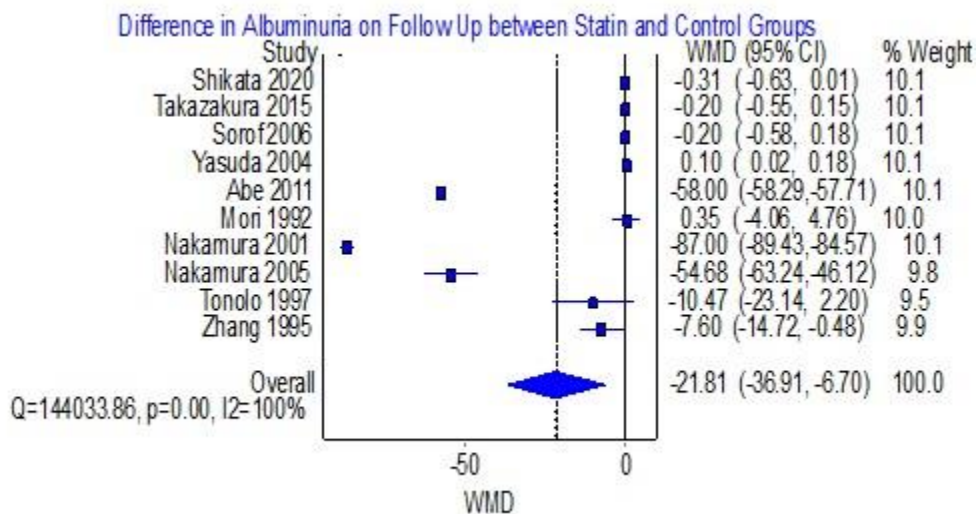
#2 ((“Diabetic Kidney Disease” OR “Diabetic Glomerulosclerosis” OR “Diabetic Nephropathy” OR “Intracapillary Glomerulosclerosis” OR “Kimmelstiel-Wilson Disease” OR “Nodular Glomerulosclerosis”))

Final: (#1) AND (#2)

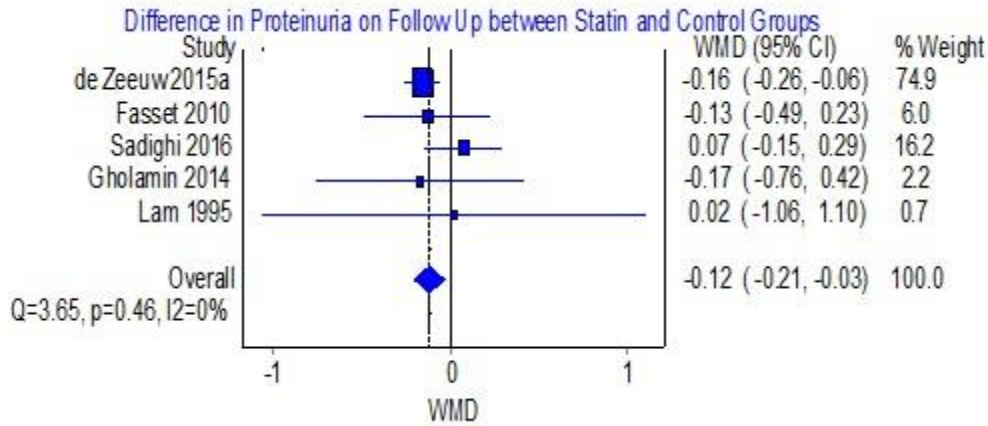
Supplementary Figure 1. PRISMA Flow Chart



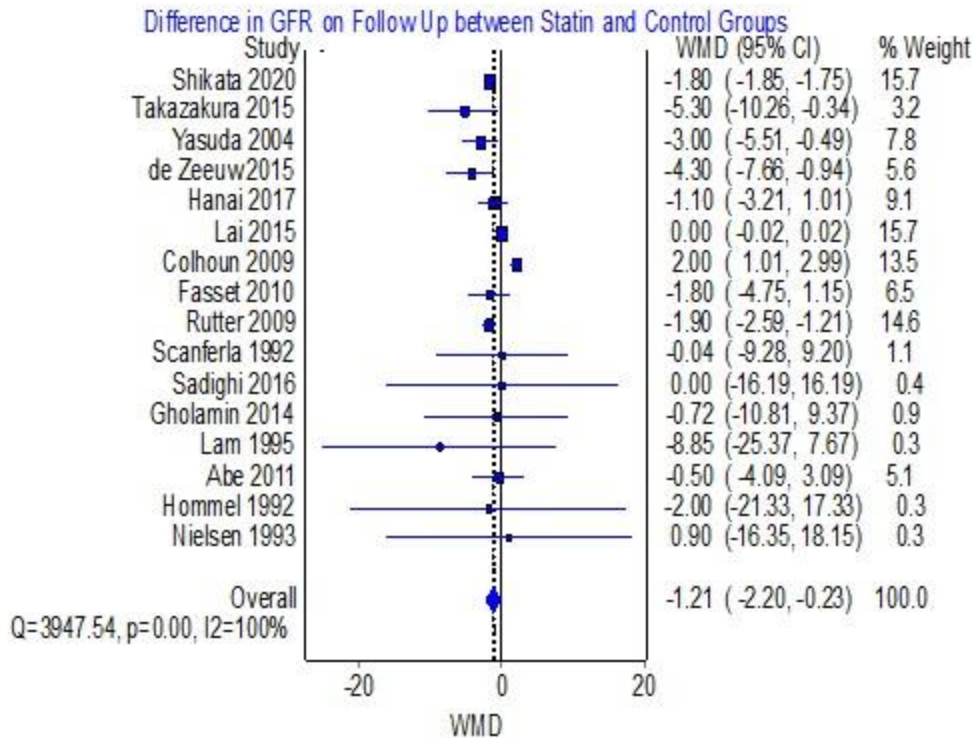
Supplementary Figure 2. The Difference in Albuminuria on Follow Up Between Statin and Control Groups.



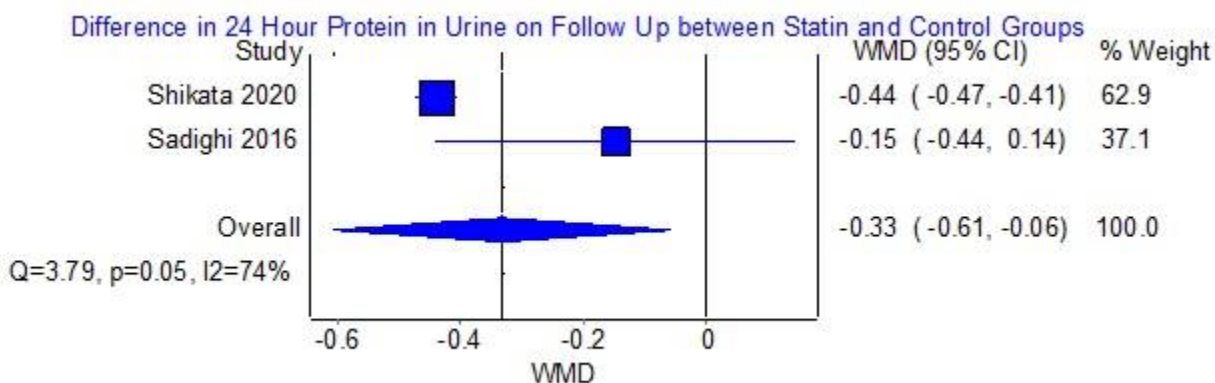
Supplementary Figure 3. The Difference in Proteinuria on Follow Up Between Statin and Control Groups.



Supplementary Figure 4. The Difference in GFR on Follow Up Between Statin and Control Groups.



Supplementary Figure 5. The Difference in 24-hour Protein in Urine on Follow Up Between Statin and Control Groups.



Supplementary Table 1. Characteristics of the Included Studies

Study	Year	Country	Design	Sample Size	Mean Age	M:F ratio	Treatment Duration (Months)	Baseline Albuminuria	Statin Intensity
Cha	2023	China	Clinical Trial	75	-	-	12	<300	Low
Shikata	2020	Japan	Clinical Trial	153	57.2	1	-	<300	Low
Takazakura	2015	Japan	Clinical Trial	106	62	6	7.5	<300	Low
Dummer	2008	Brazil	Clinical Trial	-	-	-	-	<300	Low
Sorof	2006	USA	Clinical Trial	344	65	1	4	<300	Low
Yasuda	2004	Japan	Clinical Trial	88	57.5	1	12	>300	Low
de Zeeuw	2015	Multinationality	Clinical Trial	325	57.7	4	13	>300	Moderate
de Zeeuw	2015	Multinationality	Clinical Trial	220	57.7	4	13	>300	Moderate
Hanai	2017	Japan	Retrospective Cohort	1358	60	2	60	<300	Low

Lai	2015	Taiwan	Retrospective Cohort	5569	-	-	6	<300	Low
Colhoun	2009	UK	Clinical Trial	2838	61.6	3	48	<300	Low
Luk	2010	China	Retrospective Cohort	5264	60	1	60	<300	Low
Fasset	2010	Australia	Clinical Trial	132	60.2	1.5	32	<300	Low
Rutter	2009	UK	Clinical Trial	119	64	5	24	<300	Low
Scanferla	1992	Italy	Retrospective Cohort	9	56.7	1	12	<300	Low
Zhou	2023	China	Retrospective Cohort	19858	62	1	3	<300	Low
Sadighi	2016	Iran	Clinical Trial	30	54.5	All males	3	<300	Low
Gholamin	2014	Iran	Clinical Trial	65	52.5	All males	6	<300	Low
Lam	1995	Hong Kong	Clinical Trial	24	56.4	1.1	24	<300	Low
Abe	2011	Japan	Clinical Trial	104	64.7	1.3	6	<300	Low
Hommel	1992	Denmark	Clinical Trial	21	38	1.1	12	<300	Low
Mori	1992	Japan	Clinical Trial	33	63.1	2	12	<300	Low
Nakamura	2001	Japan	Clinical Trial	60	56.5	1.8	6	<300	Low
Nakamura	2005	Japan	Clinical Trial	20	50	1.5	6	<300	Low
Nielsen	1993	Denmark	Clinical Trial	18	65	1.5	12	>300	Moderate
Tonolo	1997	Italy	Clinical Trial	19	61	3	12	<300	Low
Zhang	1995	Belgium	Clinical Trial	20	43	4	3	<300	Moderate

USA: United States of America, UK: United Kingdom

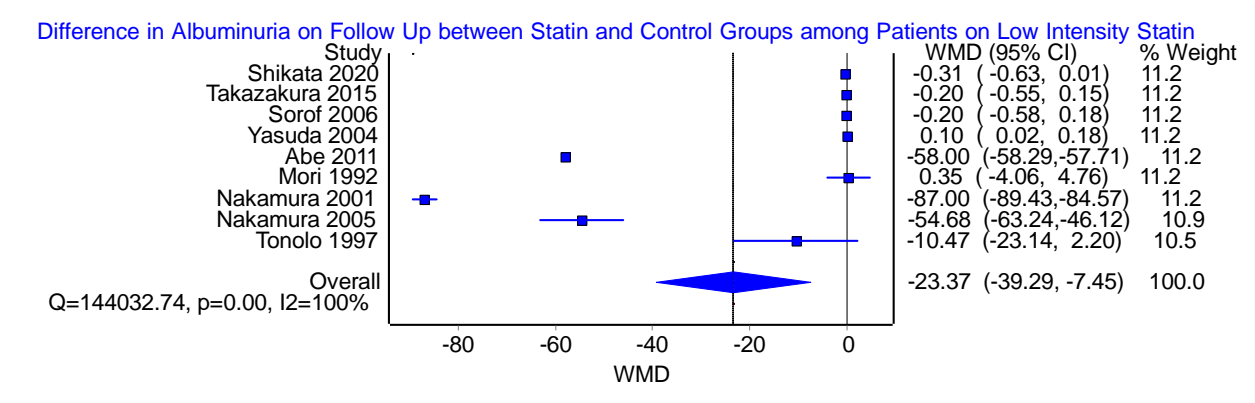
Supplementary Table 2. Summary of the RoB2 and New-Castle Ottawa Scale Results

Study	Year	Random Sequence	Allocation	Blinding of	Blinding of Outcome	Incomplete Outcome	Selective Reporting	Other	Overall
-------	------	-----------------	------------	-------------	---------------------	--------------------	---------------------	-------	---------

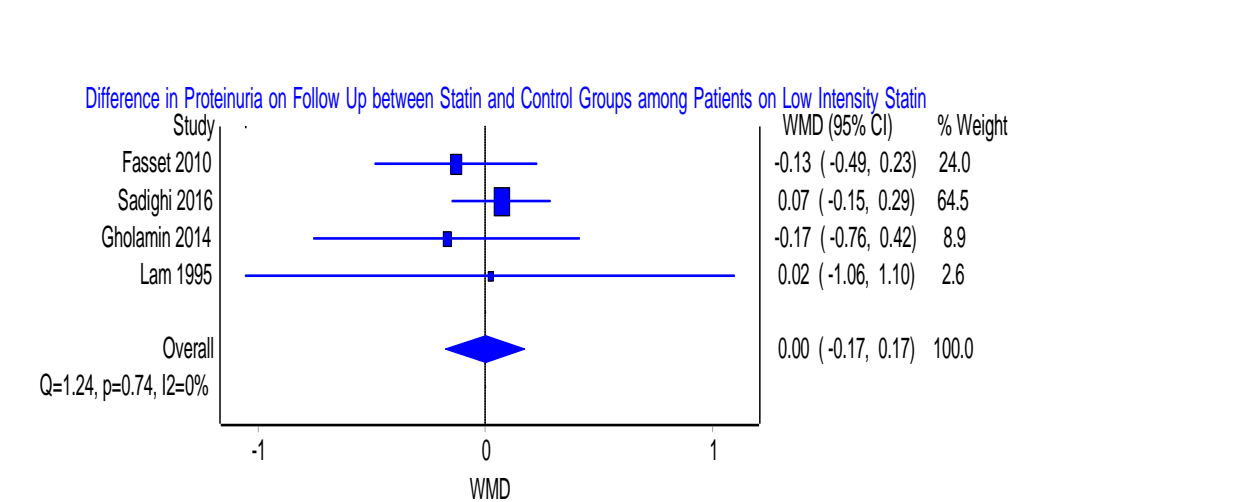
		Genera tion	Concea lment	Partici pants	Assess ment	me Data			
Cha	2023	Low	High	High	High	High	Low	Low	High
Shikat a	2020	Low	High	High	High	Low	Low	Low	High
Dumm er	2008	Low	Low	Low	Low	Low	Low	Low	Low
Takaza kura	2015	Low	High	High	High	Low	Low	Low	High
Sorof	2006	Low	Low	Low	Low	Low	Low	Low	Low
Yasuda	2004	Low	High	High	High	Low	Low	Low	High
de Zeeuw	2015	Low	Low	Low	Low	Low	Low	Low	Low
de Zeeuw	2015	Low	Low	Low	Low	Low	Low	Low	Low
Colhou n	2009	Low	High	High	High	High	Low	Low	High
Fasset	2010	Low	Low	Low	Low	Low	Low	Low	Low
Rutter	2009	Low	Low	Low	Low	Low	Low	Low	Low
Ghola min	2014	Mod	Mod	High	High	Low	Low	High	High
Lam	1995	Low	Mod	High	High	High	Low	Mod	High
Abe	2011	Low	Mod	High	High	High	Low	Low	High
Homm el	1992	Low	Mod	Low	Mod	High	Low	Mod	High
Mori	1992	Low	Mod	Mod	Mod	Low	Low	Mod	Low
Nakam ura	2001	Low	Mod	Low	Mod	Low	Low	Mod	Low
Nakam ura	2005	Low	Mod	Low	Mod	Low	Low	Mod	Low
Nielsen	1993	Low	Mod	Low	Mod	High	Low	Mod	High
Tonolo	1997	Low	Mod	Low	Mod	High	Low	Mod	High
Zhang	1995	Low	Mod	Mod	Mod	Low	Low	High	High
Study	Year	Selection		Comparabil ity		Outcome		Total	
Hanai	2017	3		2		3		8	
Lai	2015	3				4		7	
Colhoun	2009	3				4		7	

Luk	2010	3	2	4	9
Scanferla	1992	3		3	6
Zhou	2023	3	2	4	9

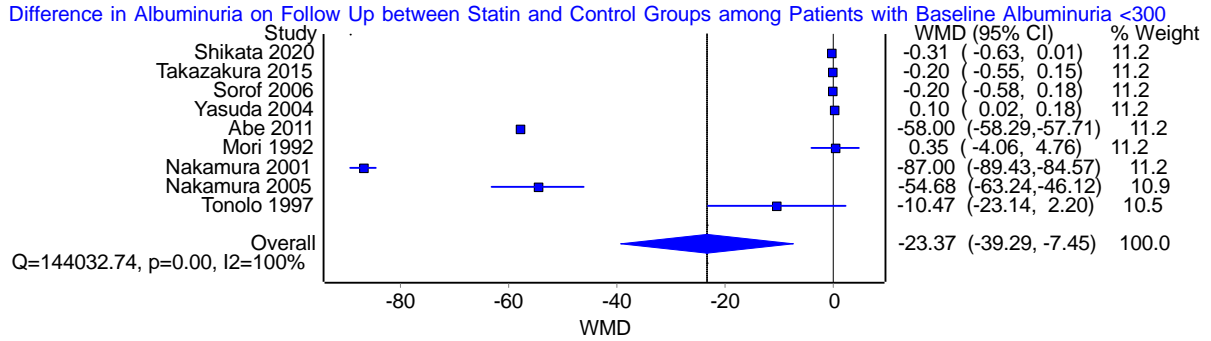
Supplementary Figure 6. The Difference in Albuminuria on Follow Up between Statin and Control Groups among Patients on Low Intensity Statin.



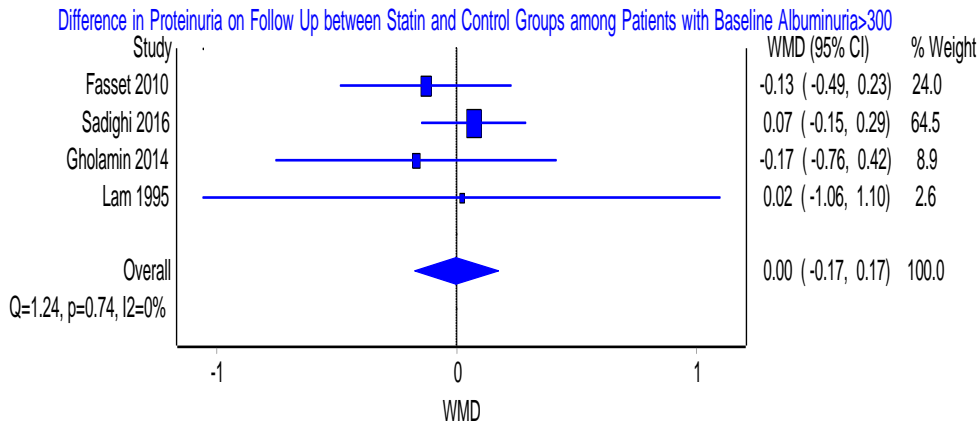
Supplementary Figure 7. The Difference in Proteinuria on Follow Up between Statin and Control Groups among Patients on Low Intensity Statin.



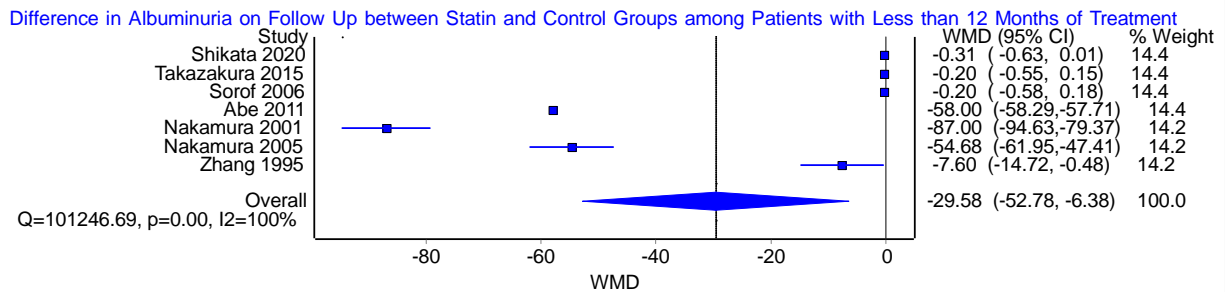
Supplementary Figure 8. The Difference in Albuminuria on Follow Up between Statin and Control Groups among Patients with Baseline Albuminuria<300.



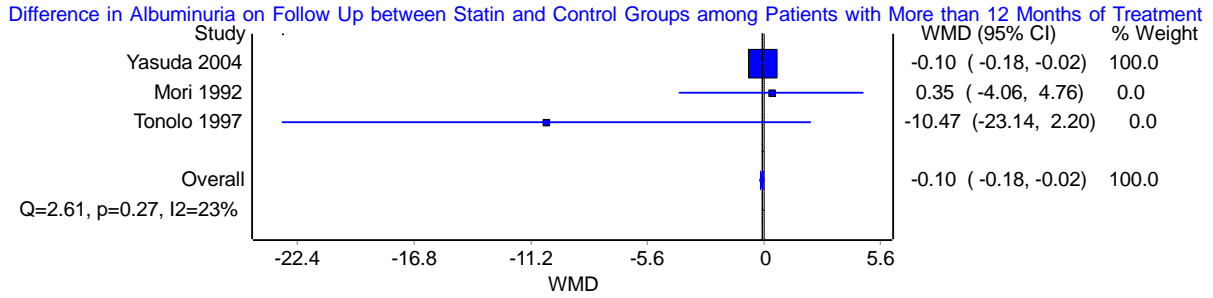
Supplementary Figure 9. The Difference in Proteinuria on Follow Up between Statin and Control Groups among Patients with Baseline Albuminuria >300.



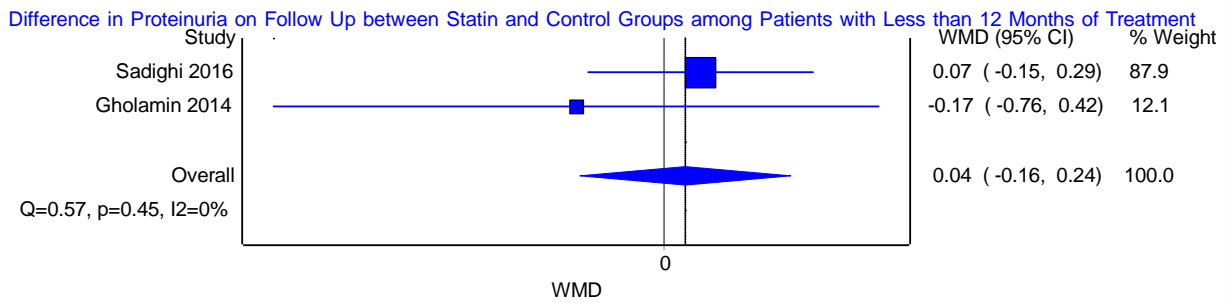
Supplementary Figure 10. The Difference in Albuminuria on Follow Up between Statin and Control Groups among Patients with Less than 12 Months of Treatment.



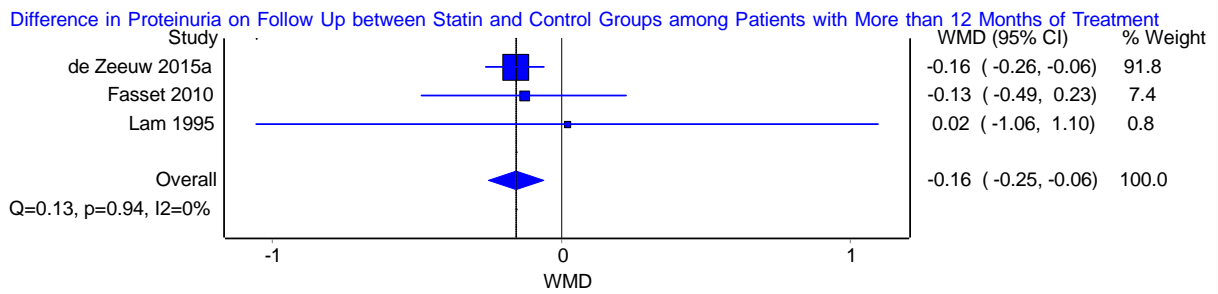
Supplementary Figure 11. The Difference in Albuminuria on Follow Up between Statin and Control Groups among Patients with More than 12 Months of Treatment.



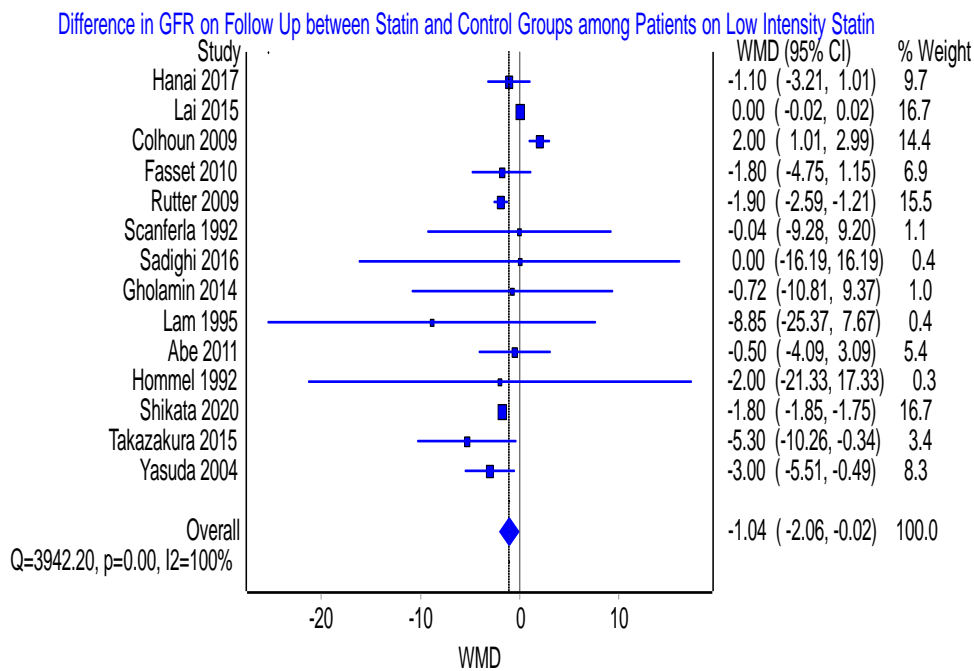
Supplementary Figure 12. The Difference in Proteinuria on Follow Up between Statin and Control Groups among Patients with Less than 12 Months of Treatment.



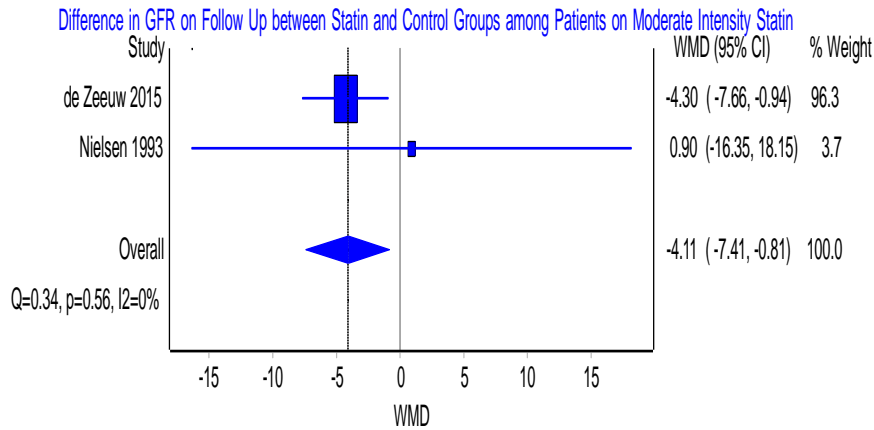
Supplementary Figure 13. The Difference in Proteinuria on Follow Up between Statin and Control Groups among Patients with More than 12 Months of Treatment.



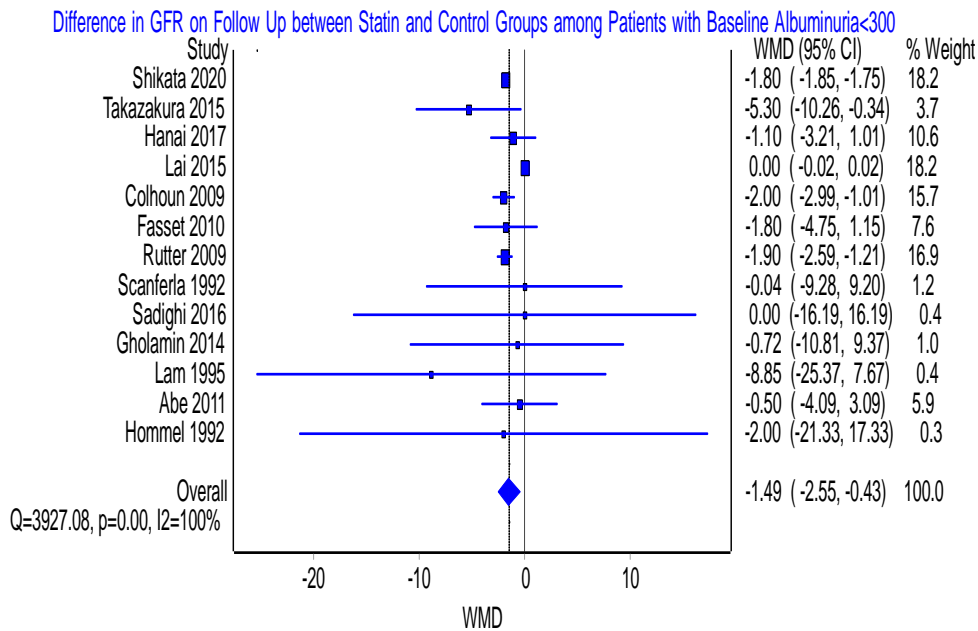
Supplementary Figure 14. The Difference in GFR on Follow Up between Statin and Control Groups among Patients on Low Intensity Statin.



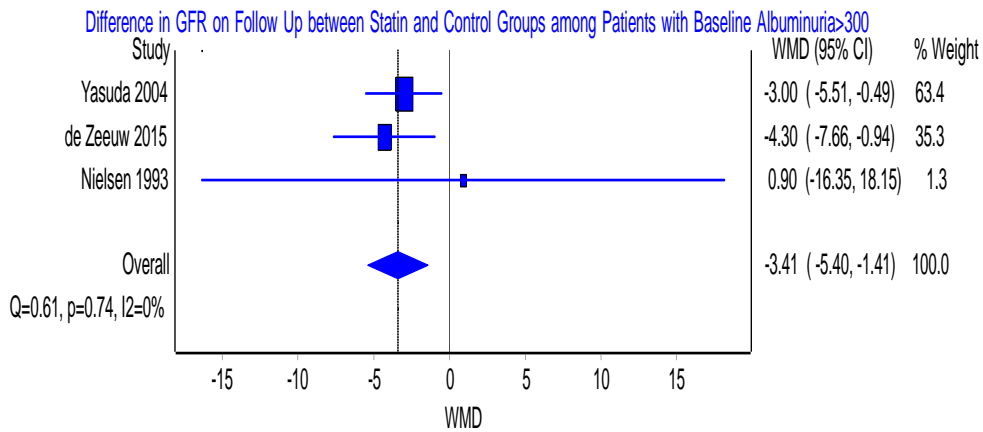
Supplementary Figure 15. The Difference in GFR on Follow Up between Statin and Control Groups among Patients on Moderate Intensity Statin.



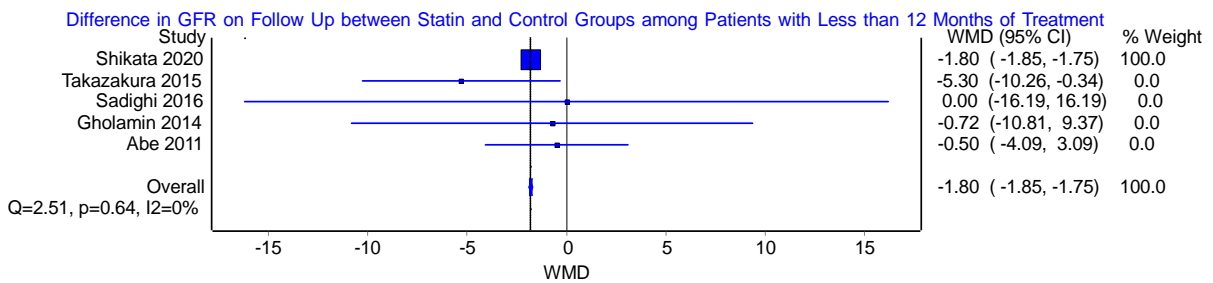
eFigure 16. The Difference in GFR on Follow Up between Statin and Control Groups among Patients with Baseline Albuminuria<300.



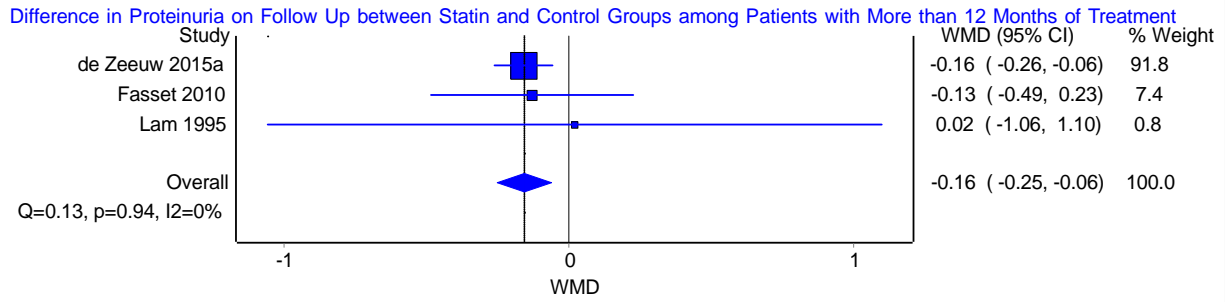
eFigure 17. The Difference in GFR on Follow Up between Statin and Control Groups among Patients with Baseline Albuminuria>300.



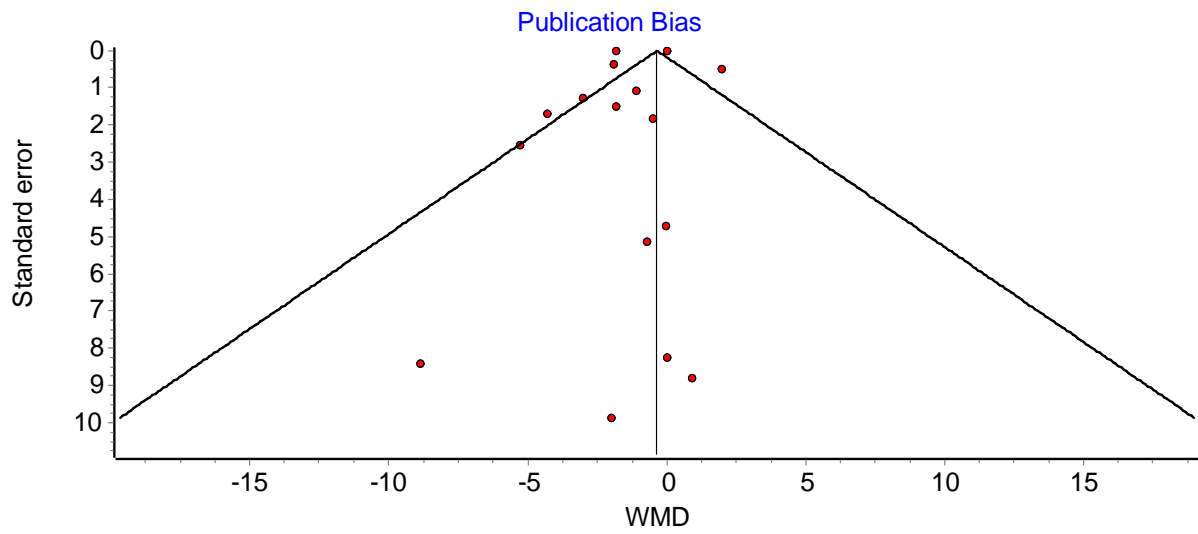
eFigure 18. The Difference in GFR on Follow Up between Statin and Control Groups among Patients with Less than 12 months of Treatment.



eFigure 19. The Difference in GFR on Follow Up between Statin and Control Groups among Patients with More than 12 months of Treatment.



eFigure 20. Publication Bias Funnel Plot.



eFigure 21. Publication Bias Doi Plot.

